

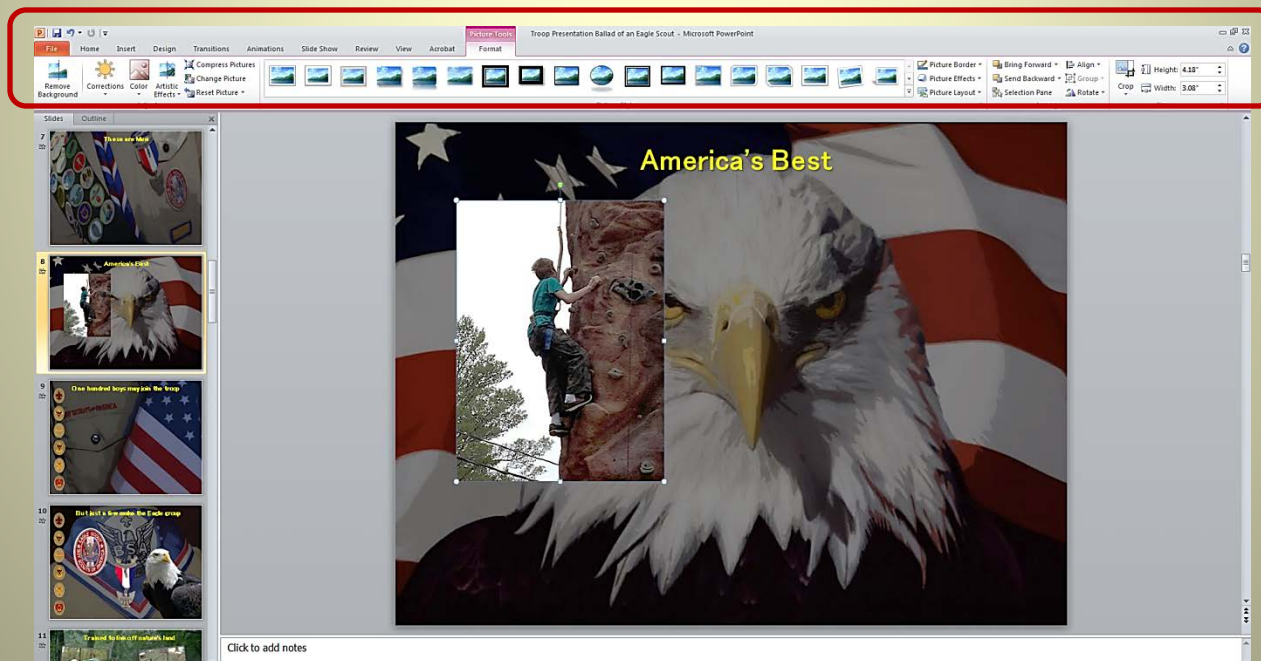
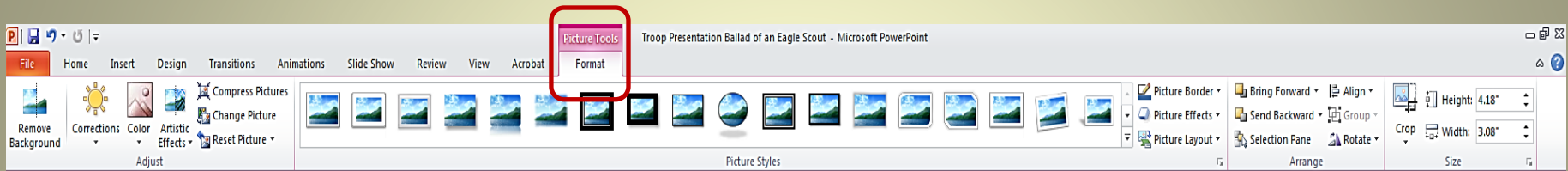


How to Enhance Your Photos

Produced by Scoutworks.weebly.com
All Rights Reserved

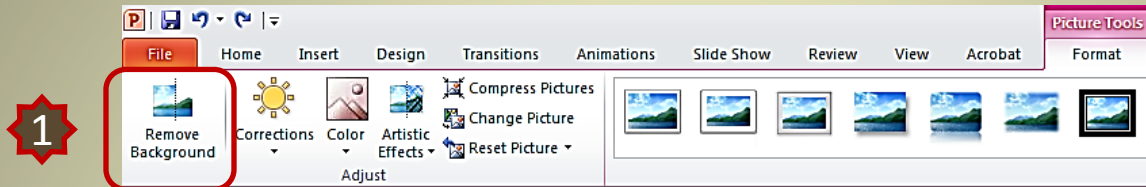
Enhancing Your Photos

Once you have inserted your photo into the slide in your presentation you can enhance the photo in many ways. Double click on the photo and the [Picture Tools] tool bar will appear. Here you will find many options available.



Removing Background


1. Select [Remove Background] **1** from the [Picture Tools] tool bar.



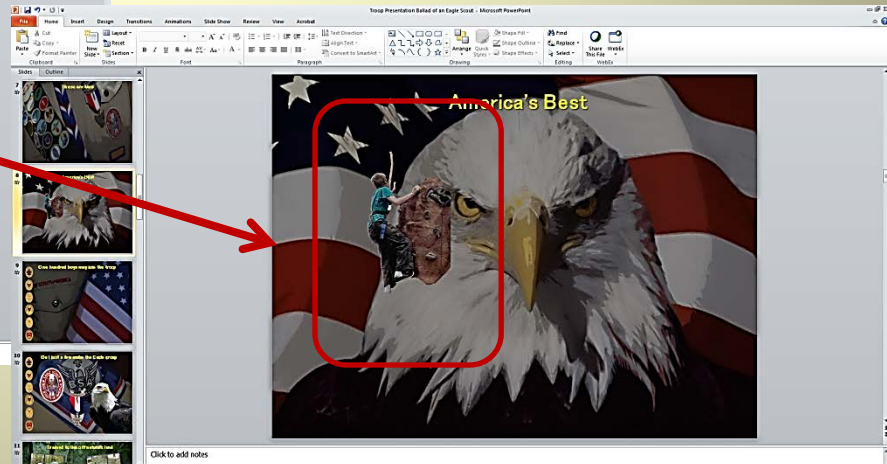
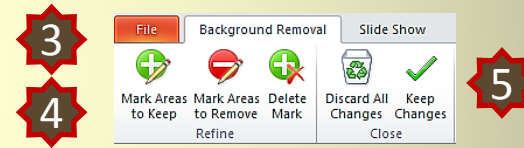
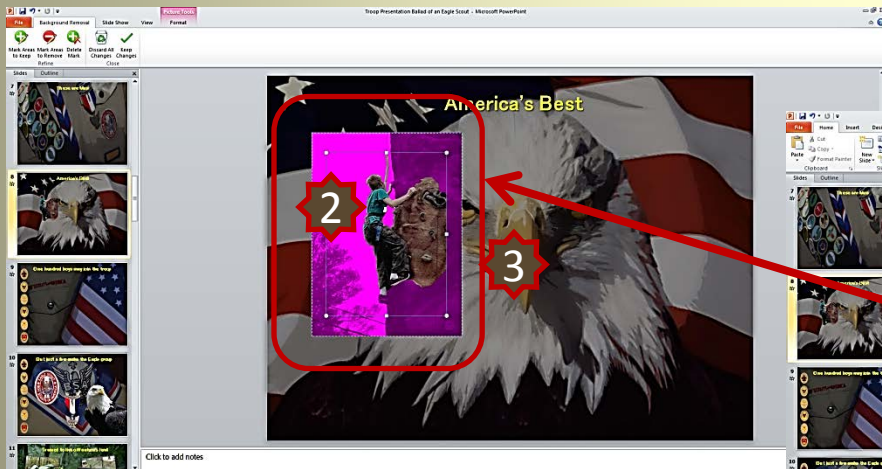
Remove Background

Automatically remove unwanted portions of the picture.

If needed, use marks to indicate areas to keep or remove from the picture.

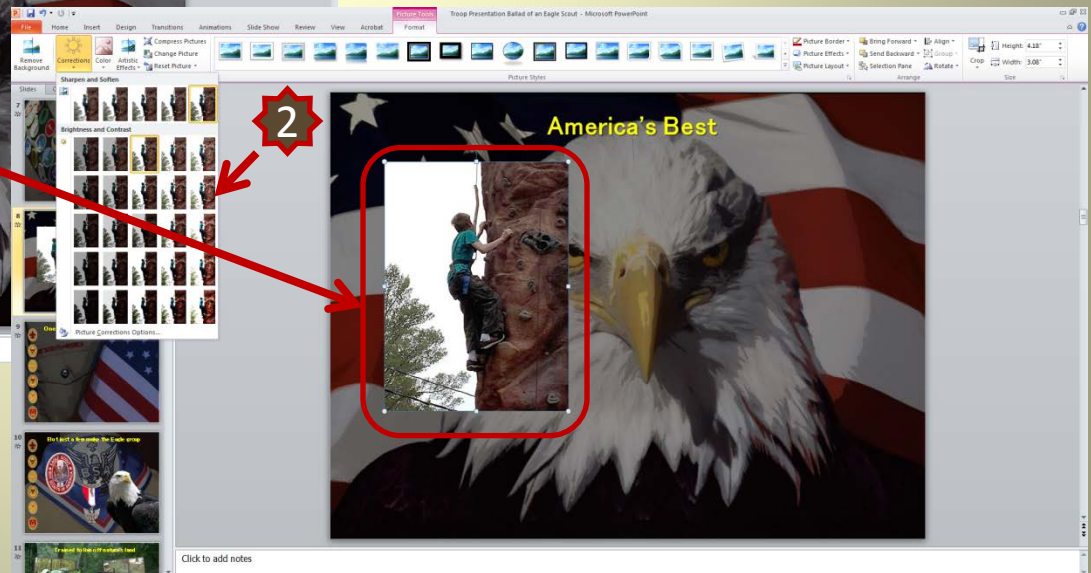
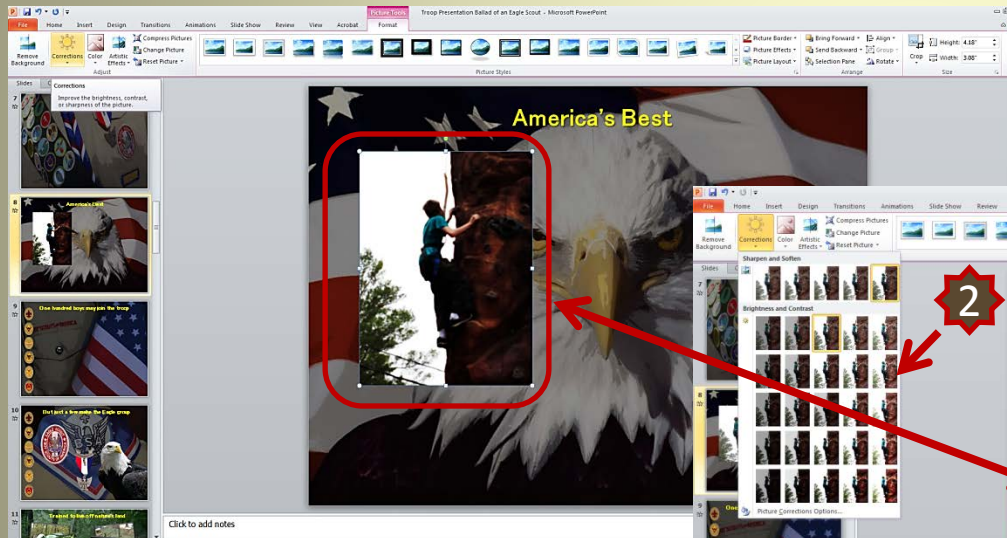
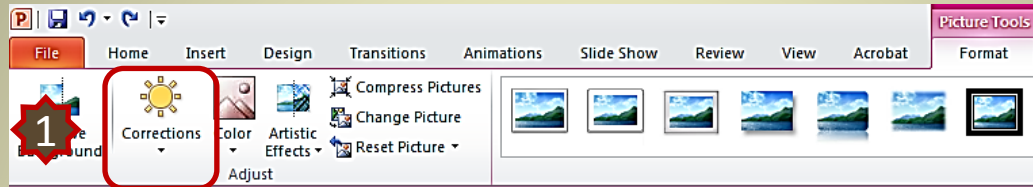
 Press F1 for more help.

2. The photo will highlight in pink **2**. You can resize the area to select what portions of the photo you keep **3** or remove **4**. Once you have made your selection select [Keep Changes] **5**.



Picture Corrections

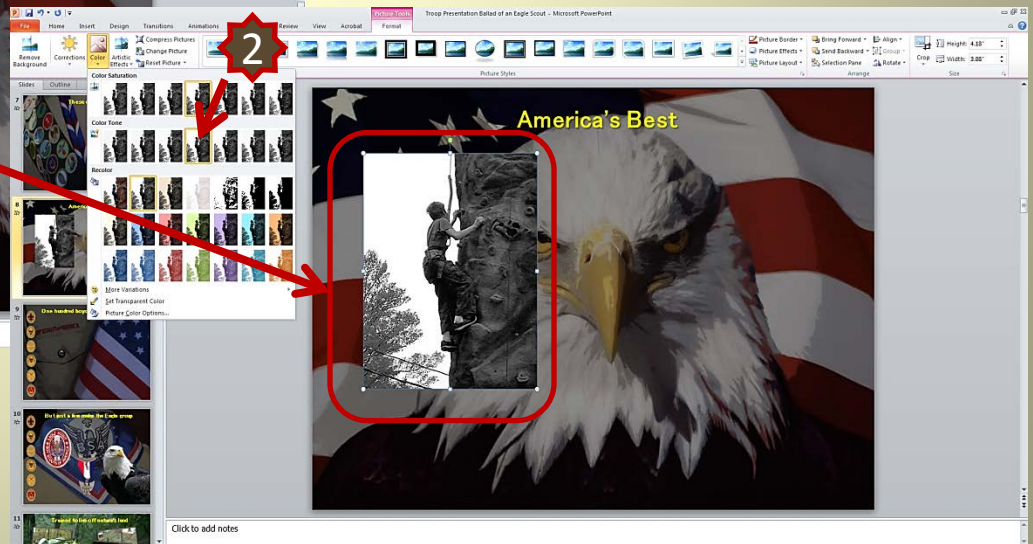
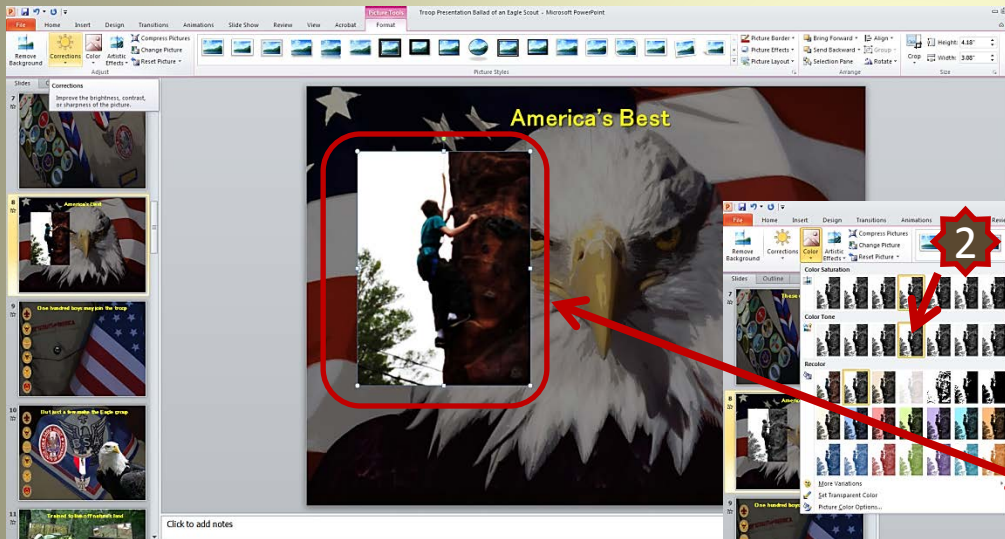
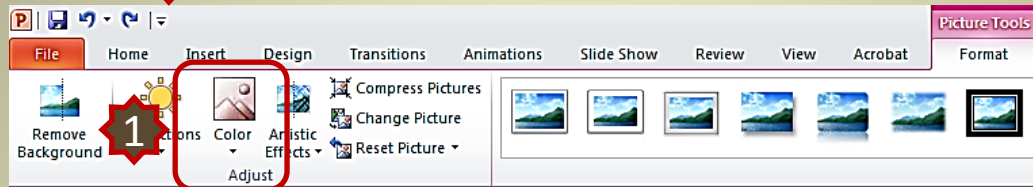
1. Select [Corrections] **1** from the [Picture Tools] tool bar. Here you can correct Brightness, Contrast and sharpness in your photo **2**.



Corrections
Improve the brightness, contrast, or sharpness of the picture.

Color Corrections

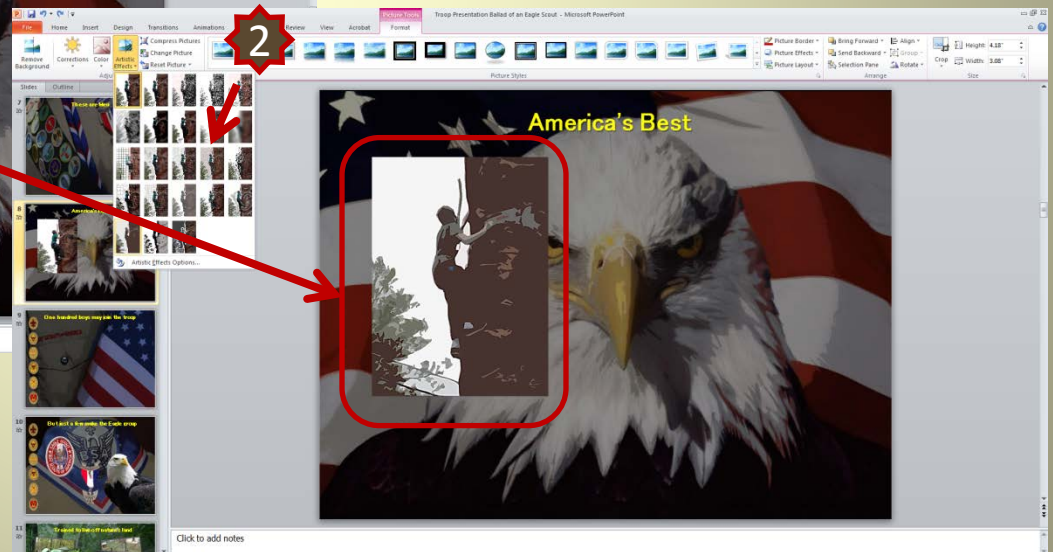
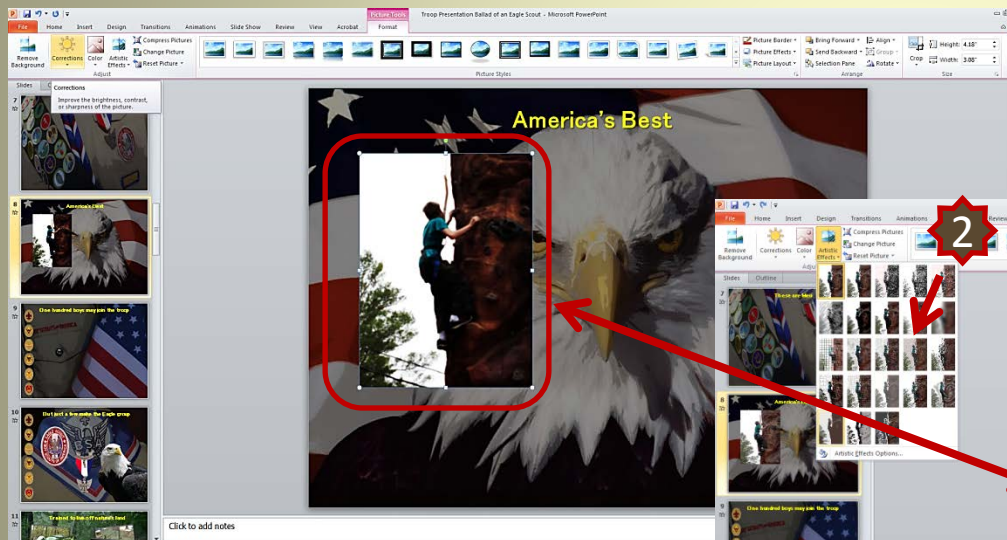
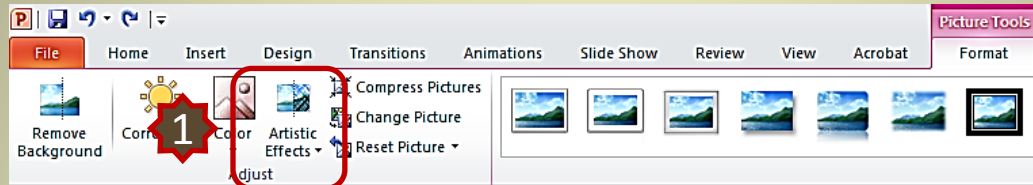
1. Select [Color] **1** from the [Picture Tools] tool bar. Here you can change color saturation, tone and other effects **2**.



Color
Change the color of the picture to improve quality or match document content.

Artistic Effects

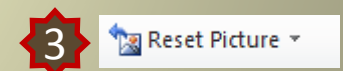
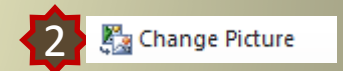
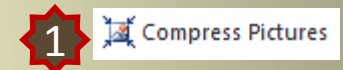
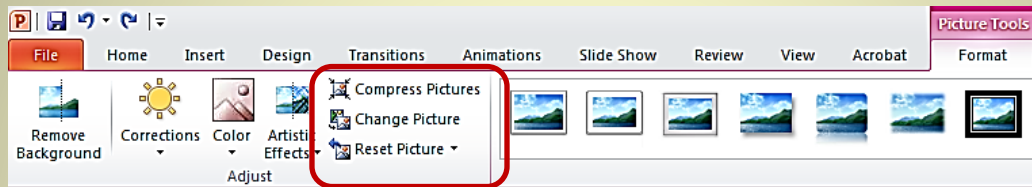
1. Select [Artistic Effects] **1** from the [Picture Tools] tool bar. Here you can make the photo look like a painting or sketch **2**.



Artistic Effects
Add artistic effects to the picture to make it look more like a sketch or painting.
Press F1 for more help.

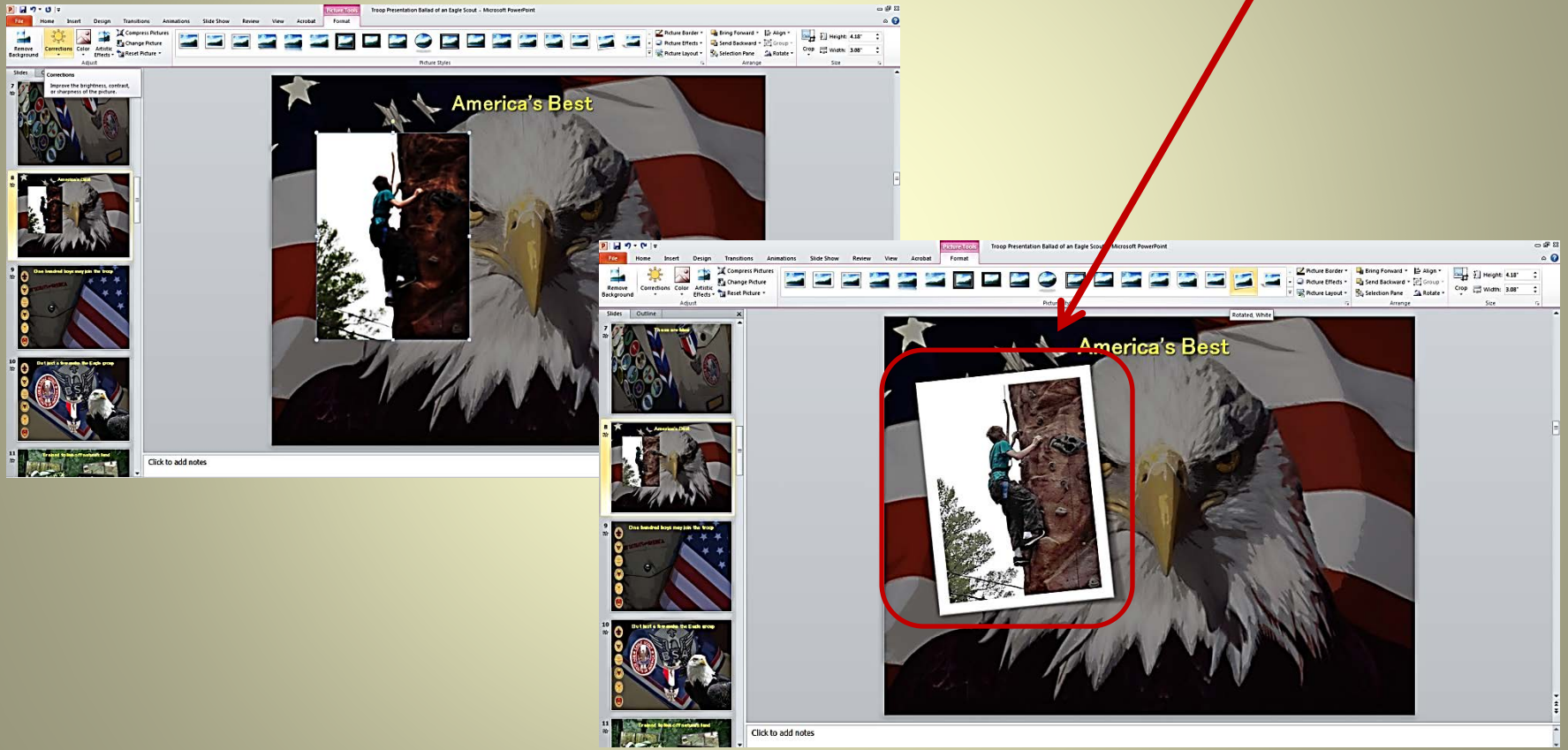
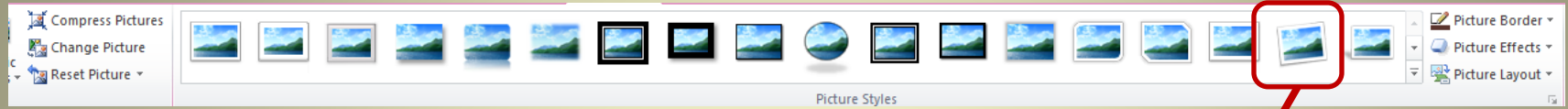
Other Picture Tools

1. Select [Compress Picture] **1** if the file size of your presentation is too large. Select [Change Picture] **2** if you wish to replace the photo with another. Select [Reset Picture] **3** to remove any changes to the photo you have made.



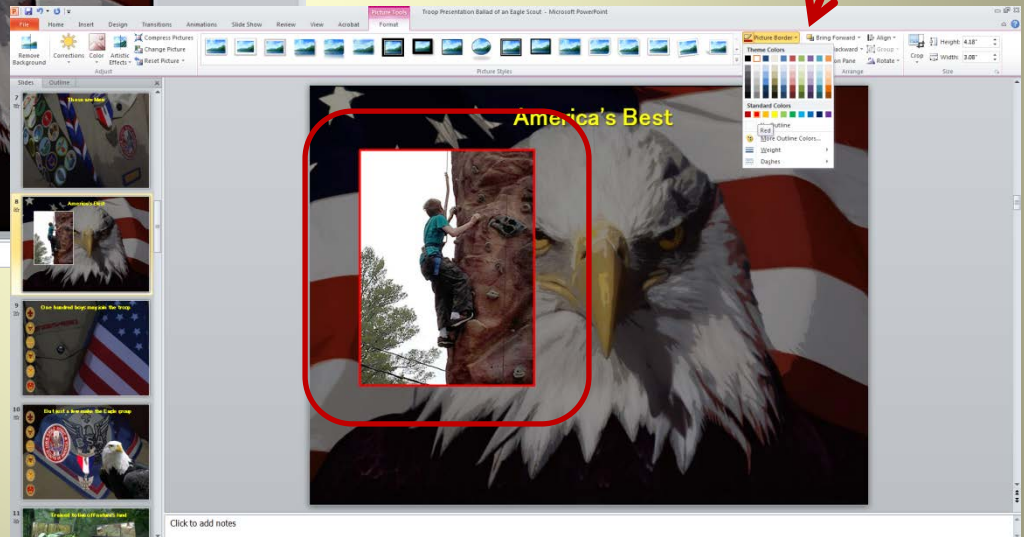
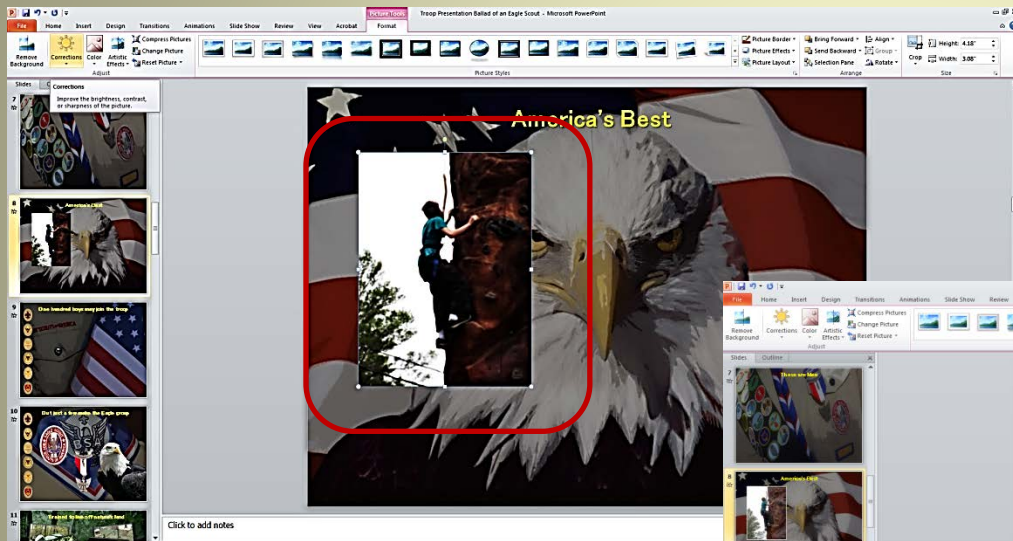
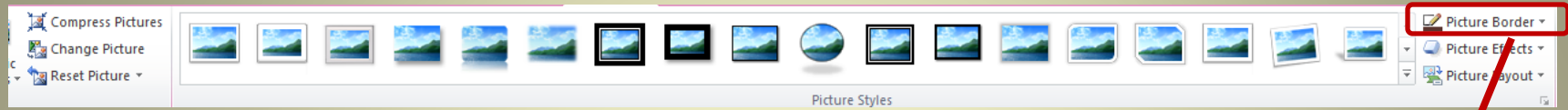
Selecting Photo Style

1. Select various photo styles from the tool bar.



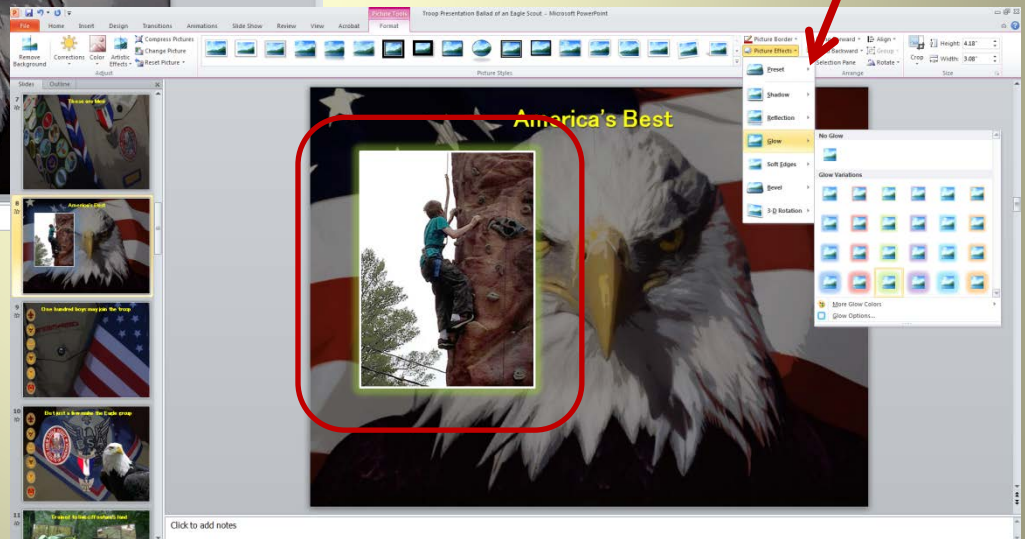
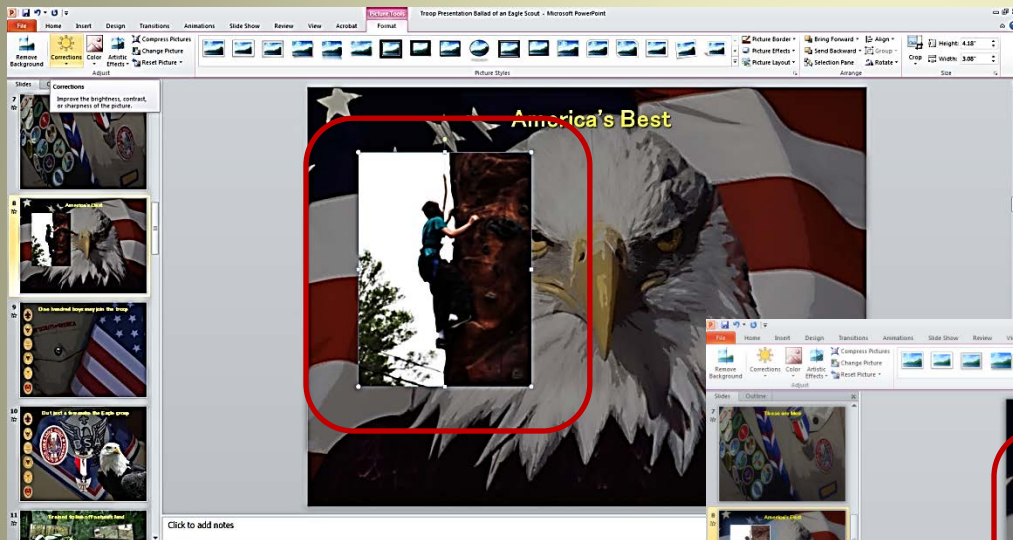
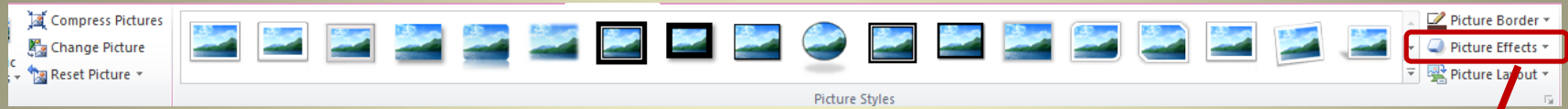
Adding / Changing Photo Border

1. Select various photo borders from the tool bar.



Adding More Photo Effects

1. Select various photo effects from the tool bar.



Thank you for choosing to Honor Your Eagle Scout with our presentation.
If you have any questions regarding this tutorial please send us an email at:

Scoutworks@gmail.com

Visit us at scoutworks.weebly.com

